

# Vasquez Rocks Natural Area

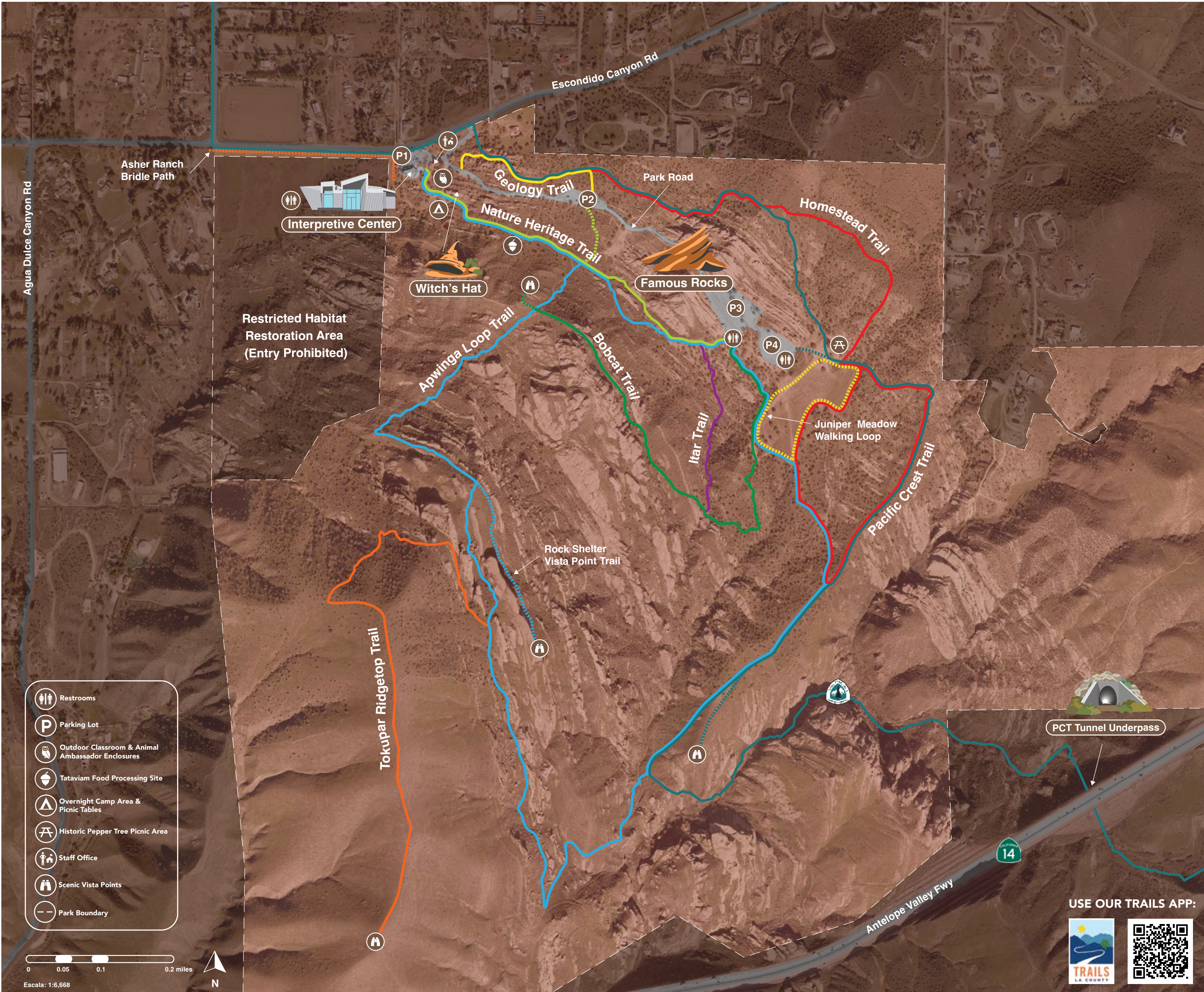
## County of Los Angeles Department of Parks and Recreation

Welcome to Vasquez Rocks Natural Area, the ancestral Tataviam village of Mapinginga. Located in the small town of Agua Dulce, this 945-acre park features iconic geology, protected habitat for native flora and fauna, and fascinating cultural history. Amenities include an interpretive center, picnic tables, educational programs, group campground, animal ambassadors, and a variety of unique hiking and equestrian trails, including a portion of the Pacific Crest Trail. We hope you enjoy your visit!

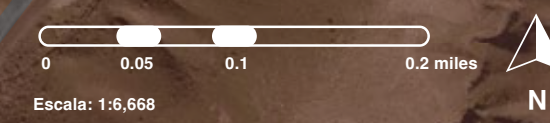
### TRAIL INFORMATION

Trail Color	Difficulty	Length	Elevation Gain
-------------	------------	--------	----------------

<b>Apwunga Loop Trail</b> One of our longer trails, Apwunga offers uphill and downhill sections, sweeping scenic views of the Soledad Basin and rock formations. Use it to connect with the Bobcat Trail, Tokupar Ridgetop Trail, or the PCT as it descends into the canyon.	Blue line	Difficult	3.4 mi	344 ft
<b>Asher Ranch Bridle Path</b>	Orange dotted line	Easy	0.26 mi	16 ft
<b>Bobcat Trail</b> This highly scenic trail takes you on a multi-level journey, from a higher vista point and down through a winding juniper woodland, offering a view of the park through a bobcat's eyes. Connects to the Apwunga, Itar, and Nature Heritage Trails.	Green line	Difficult	0.83 mi	206 ft
<b>Geology Trail</b> This short yet scenic trail offers beautiful views and interpretive signs on the geological history of Vasquez Rocks. Spanning a third of a mile, it can be experienced as an out-and-back trail or as a connection to the Pacific Crest Trail, the Homestead Trail, or to the P2 parking lot.	Yellow line	Easy	0.29 mi	33 ft
<b>Homestead Trail</b> This moderate trail takes you on a journey back in time, featuring historic sites and interpretive signage on the post European contact history of the park, from the Spanish Era to the 1960s. The Homestead Trail connects to the Geology, Pacific Crest, Apwunga, and Juniper Meadow Trails.	Red line	Moderate	1.84 mi	161 ft
<b>Itar Trail</b> An offshoot and alternate ending of the Bobcat Trail, this short yet scenic path winds through a juniper woodland, bringing you back to the base of the "Famous Rocks." Connects to the Apwunga and Nature Heritage Trails.	Purple line	Moderate	0.26 mi	48 ft
<b>Juniper Meadow Walking Loop</b> This accessible walking loop features a relatively flat, non-rocky dirt pathway for visitors to enjoy the scenery down by the famous "Famous Rocks." Usable by small children, most strollers, wagons, and some mobility devices. Connects to the PCT, Apwunga, and Homestead Trails.	Yellow dotted line	Easy	0.44 mi	20 ft
<b>Nature Heritage Trail</b> This ½ mile trail is the main thoroughfare between the Interpretive Center and the "Famous Rocks." It features interpretive signage on the area's native plants, animals, and cultural history. Use it to connect with the Bobcat, Tokupar, and Apwunga Trails.	Light green line	Moderate	0.64 mi	31 ft
<b>Pacific Crest Trail</b> This 2,650-mile National Scenic Trail runs from Mexico to Canada. It spans 2.3 miles within the park, from the tunnel under the 14 Freeway, through the scenic lower canyon, and to the front gate. Hike it in sections or use as connector between trails.	Dark blue line	Difficult	2.30 mi	319 ft
<b>Rock Shelter Vista Point Trail</b>	Blue dotted line	Moderate	0.25 mi	149 ft
<b>Tokupar Ridgetop Trail</b> An out-and-back offshoot from the Apwunga Loop Trail, this uphill climb brings you to the highest ridgeline in the park. A scenic, 360° view will make you feel on top of the world.	Orange line	Difficult	1.12 mi	210 ft



- Restrooms
- Parking Lot
- Outdoor Classroom & Animal Ambassador Enclosures
- Tataviam Food Processing Site
- Overnight Camp Area & Picnic Tables
- Historic Pepper Tree Picnic Area
- Staff Office
- Scenic Vista Points
- Park Boundary



USE OUR TRAILS APP:

### IF YOU NEED HELP:

- Call the Park Office at (661) 268-0840.
- If parking lot gates are locked, please call Los Angeles County Sheriff's Department Parks Bureau at (800) 834-0064 or (213) 974-8000.
- In case of emergency, call 911 and share your coordinates if possible.



### VOLUNTEER WITH US!

If you are interested in becoming a Parks volunteer, please call us at (661) 268-0840 for more information.

### POINTS OF INTEREST



**The Famous Rocks**  
 One of the most iconic portions of the Rocks, seen in countless films, TV shows, and more. Located adjacent to parking lot 3.



**Vasquez Rocks Interpretive Center**  
 Come inside to explore the cultural, historical, natural, and geological worlds within the park. Amenities include restrooms & gift shop.



**Tataviam Food Processing Site**  
 Historic cultural food processing site used by Tataviam ancestors hundreds of years ago.



**The Witch's Hat Rock Formation**  
 This unique rock formation bears an uncanny resemblance to a witch's hat!



**Outdoor Classroom**  
 Enjoy bench seating and check out our educational animal ambassadors and beautiful mural by artist Aaron Morse.



**PCT Lower Canyon Section and Freeway Tunnel**  
 A magnificent 2.18 mile hike down through a riparian canyon. Leads out to U.S. Forest Service property through a tunnel under the 14 Freeway.

### OUTDOOR SAFETY TIPS

- 1 Be aware that you are in a natural area and habitat for wildlife. Be courteous to the land, wildlife, and other visitors.
- 2 Stay on designated trails. Walking off-trail increases your risk of injury or getting lost.
- 3 Know how to navigate safely. Using our official map app is a great place to start. Be aware of how to share your location or coordinates if you need help.
- 4 Wear comfortable, weather-appropriate clothing and shoes. Bring sunscreen and a hat as shade is limited in the park.
- 5 Drink plenty of water before and during your hike. Bring more water than you think you need: a minimum of 1 liter for every two hours is recommended.
- 6 Have a charged phone in case you or others need assistance. An extra charging pack can be helpful.
- 7 Check the map to your left for trail difficulty, and take a picture of this map to help you on your hike.
- 8 Share the trail: Always yield for equestrians and be respectful of horses.
- 9 High Fire Danger Area: No open flames or incendiary devices.
- 10 Follow the principles of "Leave No Trace."

### TRANSLATION

Traducción en Español:  
 中文翻譯:  
 한국어 번역:



### RULES AND REGULATIONS

Violation of rules and regulations may result in a fine and/or removal from the facility. Los Angeles County Code 17.04.250

NO RC CARS OR AIRCRAFT L.A. COUNTY CODE 17.04.250	NO MOTORCYCLES ON TRAILS L.A. COUNTY CODE 17.04.250	FILM PERMIT REQUIRED L.A. COUNTY CODE 22.56.3025	CAMPING PERMIT REQUIRED L.A. COUNTY CODE 17.04.250	DISPOSE OF YOUR TRASH L.A. COUNTY CODE 17.04.250	KEEP DOGS ON LEASH L.A. COUNTY CODE 17.04.250	NO BICYCLES ON TRAILS L.A. COUNTY CODE 17.04.250
NO FIREWORKS OR EXPLOSIVES L.A. COUNTY CODE 17.04.250	NO OPEN FLAMES OR CAMPFIRES L.A. COUNTY CODE 17.04.250	NO DAMAGE OR REMOVAL L.A. COUNTY CODE 17.04.250	NO SMOKING OR VAPING L.A. COUNTY CODE 17.04.250	NO ALCOHOL OR NARCOTICS L.A. COUNTY CODE 17.04.250	NO FIREARMS OR WEAPONS L.A. COUNTY CODE 17.04.250	NO DISTURBANCES OR LOUD MUSIC L.A. COUNTY CODE 17.04.250