



Quick Guide courtesy of  
County of Los Angeles

# QUICK GUIDE TO STOCKER CORRIDOR TRAIL

**DESCRIPTION:** The Stocker Corridor Trail is the easternmost segment of the Park to Playa Trail, a 13-mile regional trail that connects the Baldwin Hills Parklands to the Pacific Ocean. The Stocker Corridor Trail parallels Stocker Street with immediate connections to Norman O. Houston Park and Kenneth Hahn State Recreation Area.

**DIRECTIONS:** From the 405 southbound, take the Jefferson Boulevard exit and continue east and turn right onto West Slauson Avenue. From the 405 northbound, take the Jefferson Boulevard exit east and turn right on West Slauson Avenue. Turn left on La Cienaga Boulevard, then right on Stocker Street, followed by a left onto La Brea Avenue. Parking is available at Norman O. Houston Park.



**Length:** 1.35 miles  
**Elev. Gain:** 233 feet

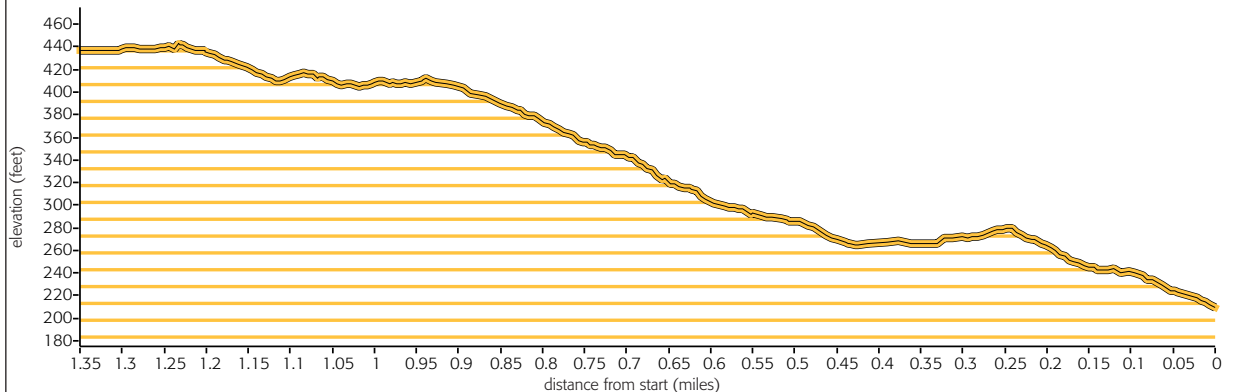


## Access & Features

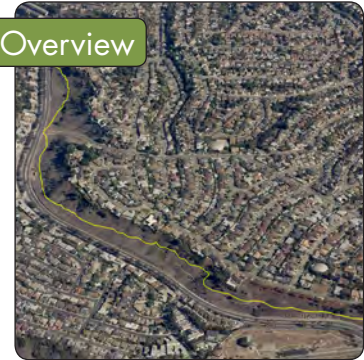
- Trailhead
- Trail Access Point
- Restroom

Park to Playa Trail

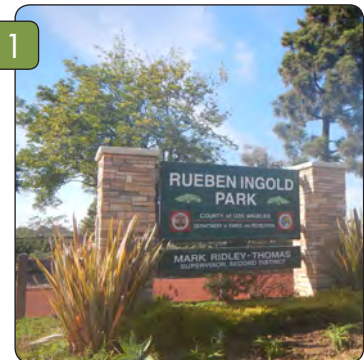
Public Parkland and Other Protected Open Space



## Overview



1



2



# QUICKGUIDE INFORMATION

COURTESY OF THE COUNTY OF LOS ANGELES | DEPARTMENT OF PARKS AND RECREATION

## SAFETY FIRST



In case of **EMERGENCY** dial 911.

For non-emergencies on County trails call the Los Angeles County Sheriff's Parks Bureau Dispatch at (800) 834-0064.

## HAZARDS ON THE TRAIL



Rattlesnakes occasionally sun themselves in the middle of the trail. If encountered, keep your distance and allow space for the snake to retreat.



Poison oak can be identified by groups of 3 leaves going up the branch. It's best avoided by staying on the trail and wearing long pants and long-sleeved shirts to prevent contact with skin.



Ticks are most often found in shaded, grassy areas off the beaten path. Stick to established trails and wear long pants to avoid contact. Check for ticks frequently, especially the scalp, waist and other dark places where they can hide.

## SHARE THE TRAIL



When trail conditions require a right of way for safe passage, **equestrian users have the primary right of way, hikers next and then mountain bikers.** When trail conditions allow and when there is width to safely pass, common courtesy should prevail for all users. Stand to one side of the trail and allow them to pass. When in a group, avoid blocking the trail. **Mountain bikers yield to all trail users.** Anticipate other trail users as you ride around corners. Mountain bikers traveling downhill must yield to all users, including other mountain bikers, headed uphill. In general, make each pass a safe and courteous one.

## WHAT TO BRING

- ✓ Water for you and your animal(s)
- ✓ Trail map
- ✓ High energy snacks
- ✓ Waste bags for your dog
- ✓ First aid kit
- ✓ Extra clothing
- ✓ Sunglasses/hat
- ✓ Sunscreen
- ✓ Insect repellent
- ✓ Trekking poles (optional)
- ✓ Flashlight (optional)

## ADDITIONAL RESOURCES

For information visit [trails.lacounty.gov](http://trails.lacounty.gov) or any of our partners' websites at [nps.gov](http://nps.gov), [parks.ca.gov](http://parks.ca.gov), [smmc.ca.gov](http://smmc.ca.gov), [lamountains.com](http://lamountains.com), or [rmc.ca.gov](http://rmc.ca.gov). Visitor Center for Santa Monica Mountains National Recreation Area, (805) 370-2300

## MAP DISCLAIMER

This map was created for informational purposes only. Reasonable effort has been made to ensure the accuracy of the maps, images, and data provided; nevertheless, some information may not be accurate.