



QUICK GUIDE TO EATON CANYON TRAIL

DESCRIPTION: Eaton Canyon is an easily accessible trail within the Eaton Canyon Natural Area Park, a 190 acre nature preserve situated at the base of the San Gabriel Mountains. The trail offers an enjoyable hike through oak forests and riparian woodlands. Docent guided tours are also provided from Eaton Canyon Nature Center.

DIRECTIONS: The trail is accessible from the Eaton Canyon Nature Center at 1750 N. Altadena Drive in Pasadena. From Interstate 210 W, exit toward Madre Street, turn right onto Sierra Madre Villa Avenue, and continue onto N. Altadena Drive until you see the entrance on your right. From Interstate 210 E, exit Altadena Drive, merge onto E Corson Street, then turn left onto N Altadena Drive and continue until you see the entrance on your right.

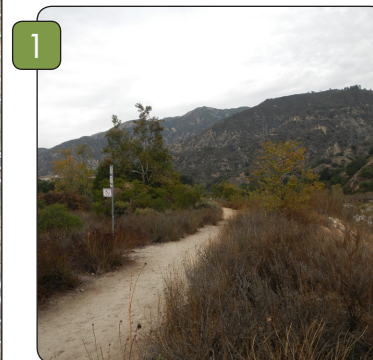
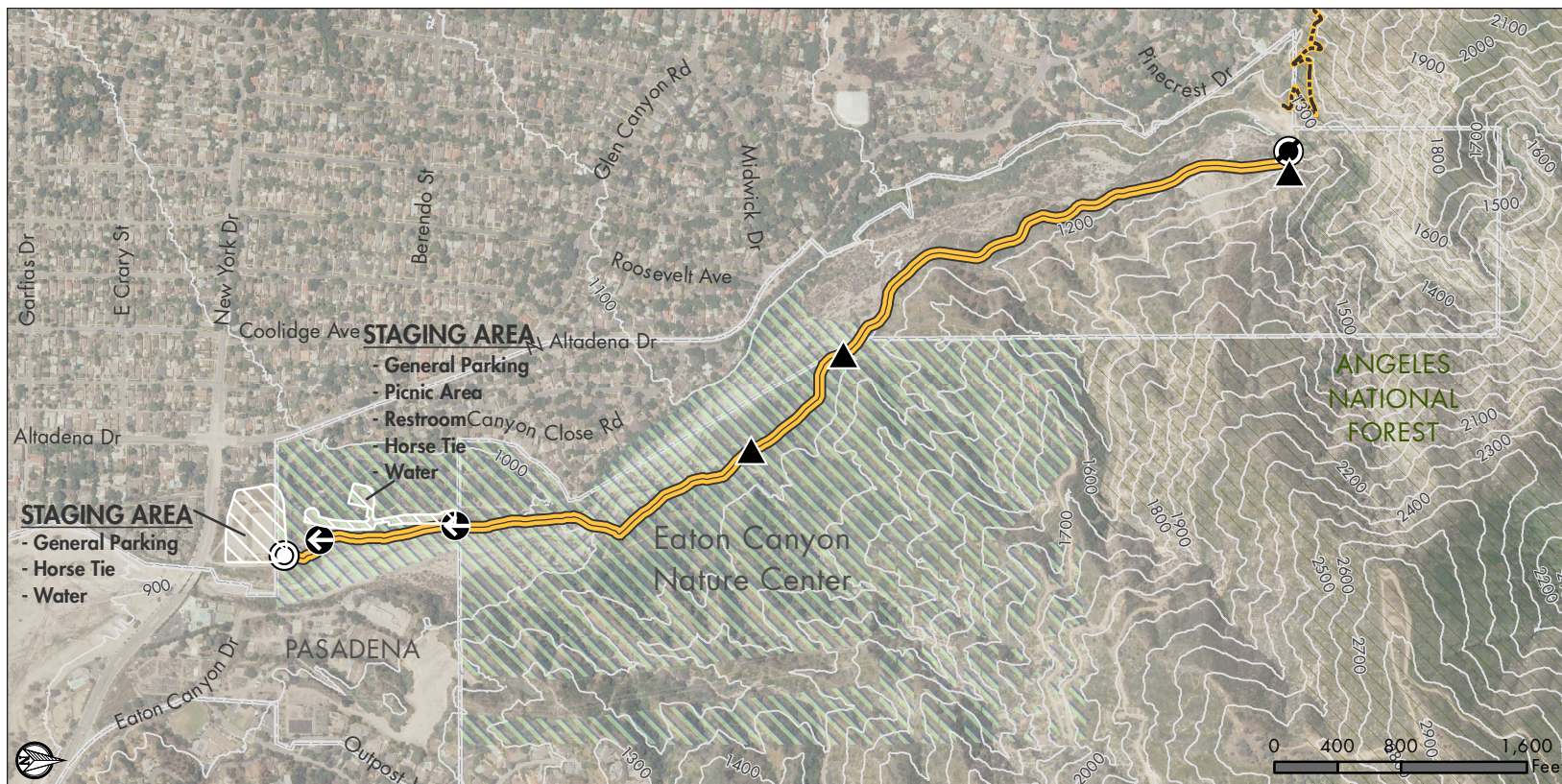


Trail ID Number: 11

Length: 1.42 miles

Avg. Width: 11 feet

Elevation Gain: 310 feet

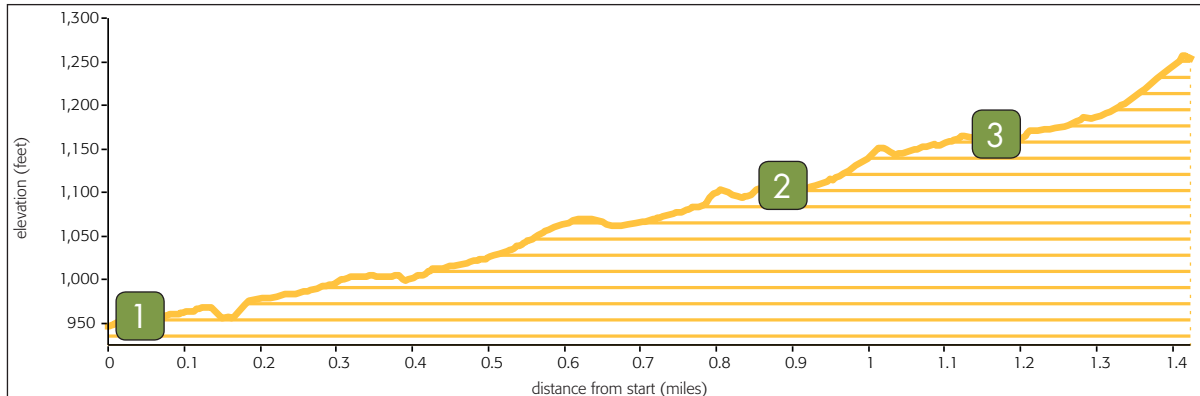


Access & Features

- Trailhead
- End of Public Trail
- Trail Access Point
- Trail Junction

Trail Type

- Natural Trail
- Flood Control Channel



QUICKGUIDE INFORMATION

COURTESY OF THE COUNTY OF LOS ANGELES | DEPARTMENT OF PARKS AND RECREATION

SAFETY FIRST



In case of **EMERGENCY** dial 911.

For non-emergencies on County trails call the Los Angeles County Sheriff's Parks Bureau Dispatch at (800) 834-0064.

HAZARDS ON THE TRAIL



Rattlesnakes occasionally sun themselves in the middle of the trail. If encountered, keep your distance and allow space for the snake to retreat.



Poison oak can be identified by groups of 3 leaves going up the branch. It's best avoided by staying on the trail and wearing long pants and long-sleeved shirts to prevent contact with skin.



Ticks are most often found in shaded, grassy areas off the beaten path. Stick to established trails and wear long pants to avoid contact. Check for ticks frequently, especially the scalp, waist and other dark places where they can hide.

SHARE THE TRAIL



When trail conditions require a right of way for safe passage, **equestrian users have the primary right of way, hikers next and then mountain bikers.** When trail conditions allow and when there is width to safely pass, common courtesy should prevail for all users. Stand to one side of the trail and allow them to pass. When in a group, avoid blocking the trail. **Mountain bikers yield to all trail users.** Anticipate other trail users as you ride around corners. Mountain bikers traveling downhill must yield to all users, including other mountain bikers, headed uphill. In general, make each pass a safe and courteous one.

WHAT TO BRING

- ✓ Water for you and your animal(s)
- ✓ Trail map
- ✓ High energy snacks
- ✓ Waste bags for your dog
- ✓ First aid kit
- ✓ Extra clothing
- ✓ Sunglasses/hat
- ✓ Sunscreen
- ✓ Insect repellent
- ✓ Trekking poles (optional)
- ✓ Flashlight (optional)

ADDITIONAL RESOURCES

For information visit trails.lacounty.gov or any of our partners' websites at nps.gov, parks.ca.gov, smmc.ca.gov, lamountains.com, or rmc.ca.gov. Visitor Center for Santa Monica Mountains National Recreation Area, (805) 370-2300

MAP DISCLAIMER

This map was created for informational purposes only. Reasonable effort has been made to ensure the accuracy of the maps, images, and data provided; nevertheless, some information may not be accurate.