

PUBLIC MEETING

SANTA SUSANA MOUNTAINS

• TRAILS MASTER PLAN - PHASE II •

THURSDAY

NOVEMBER

9

6 PM - 8 PM

STEVENSON RANCH LIBRARY
25950 THE OLD ROAD,
STEVENSON RANCH, CA 91381

LOS ANGELES COUNTY
DEPARTMENT OF PARKS
AND RECREATION

Please join us!

The purpose of this public outreach meeting is to introduce the project and gain valuable feedback from residents and interested parties within the vicinity of the study area.

The Santa Susana Mountains Trails Master Plan - Phase II will act as a framework to encourage and promote expansion of the multi-use trail network and recommend improvements to the existing trails in the study area.

Refreshments will be provided. Free parking is available at the event location.



SHOULD YOU HAVE ANY ADDITIONAL QUESTIONS, PLEASE CONTACT:

Mr. Zachary Likins, Department of Parks and Recreation at
ZLikins@parks.lacounty.gov.

Pursuant to the American with Disabilities Act (ADA), the County of Los Angeles Department of Parks and Recreation has designated an ADA Coordinator to effect compliance with the non-discriminatory provisions of the ADA. Upon 3-day request/notice, sign language interpretation and related materials in alternative formats (Braille-transcript, large print, audio-record, video captioning, etc.) or any other accommodations are available for County sponsored activities and events.

For more information you may contact the ADA Coordinator's Office at (213) 738-2970, TTY (213) 427-6118, Fax (213) 738-8398.

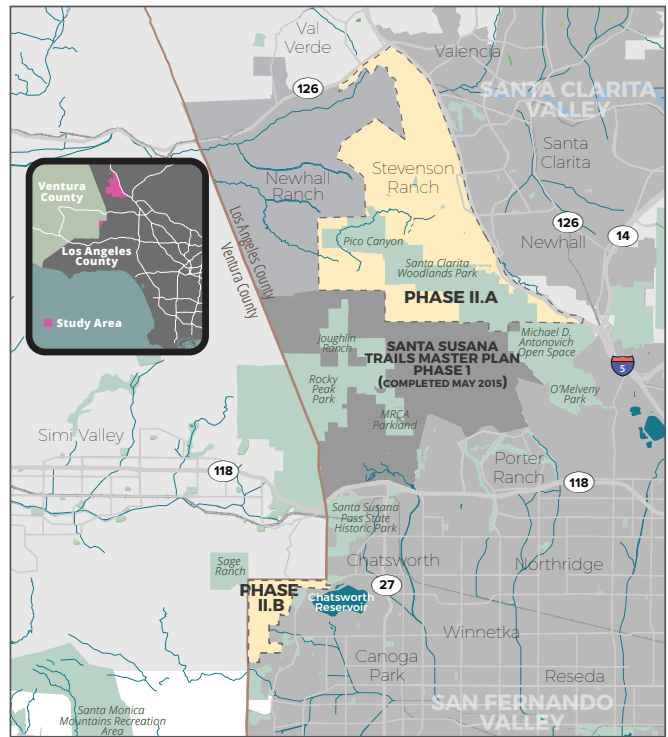
FACT SHEET

The Santa Susana Mountains Trails Master Plan - Phase II encompasses approximately 24 square miles in the Santa Clarita Valley and San Fernando Valley in the northwestern portion of Los Angeles County.

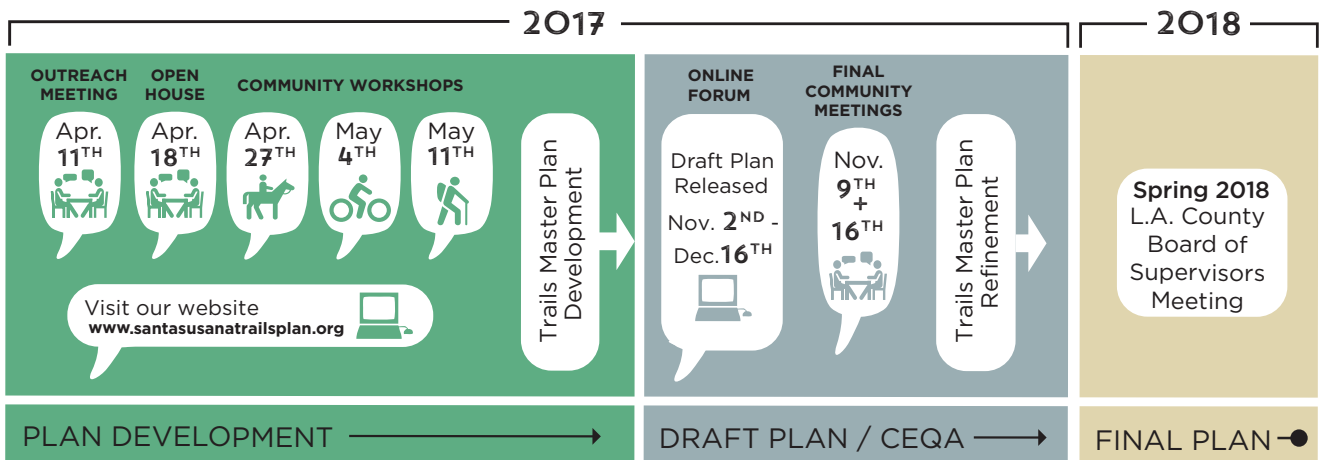
The study area is composed of generally mountainous and valley terrain that abuts Henry Mayo Drive (SR-126) to the north, the Interstate-5 freeway and the City of Los Angeles to the east, the City of Los Angeles and Phase I of the Santa Susana Mountains Final Trails Master Plan Area to the south, and the Newhall Ranch Specific Plan Area and Ventura County to the west. The study area is located in the Fifth Supervisorial District.

The Trails Master Plan will act as a framework to encourage and promote new multi-use trails and recommend improvements to existing trails, planning trails with seamless transitions throughout the proposed study area to areas, jurisdictions, and prime destinations within and adjacent to the proposed study area. The plan will include recommendations for reducing unmet local recreation demand in the Santa Clarita Valley Planning Area, San Fernando Valley Planning Area, and in the 5th Supervisorial District.

STUDY AREAS:
Santa Susana Trails Master Plan Phase II



STUDY TIMELINE



*subject to change